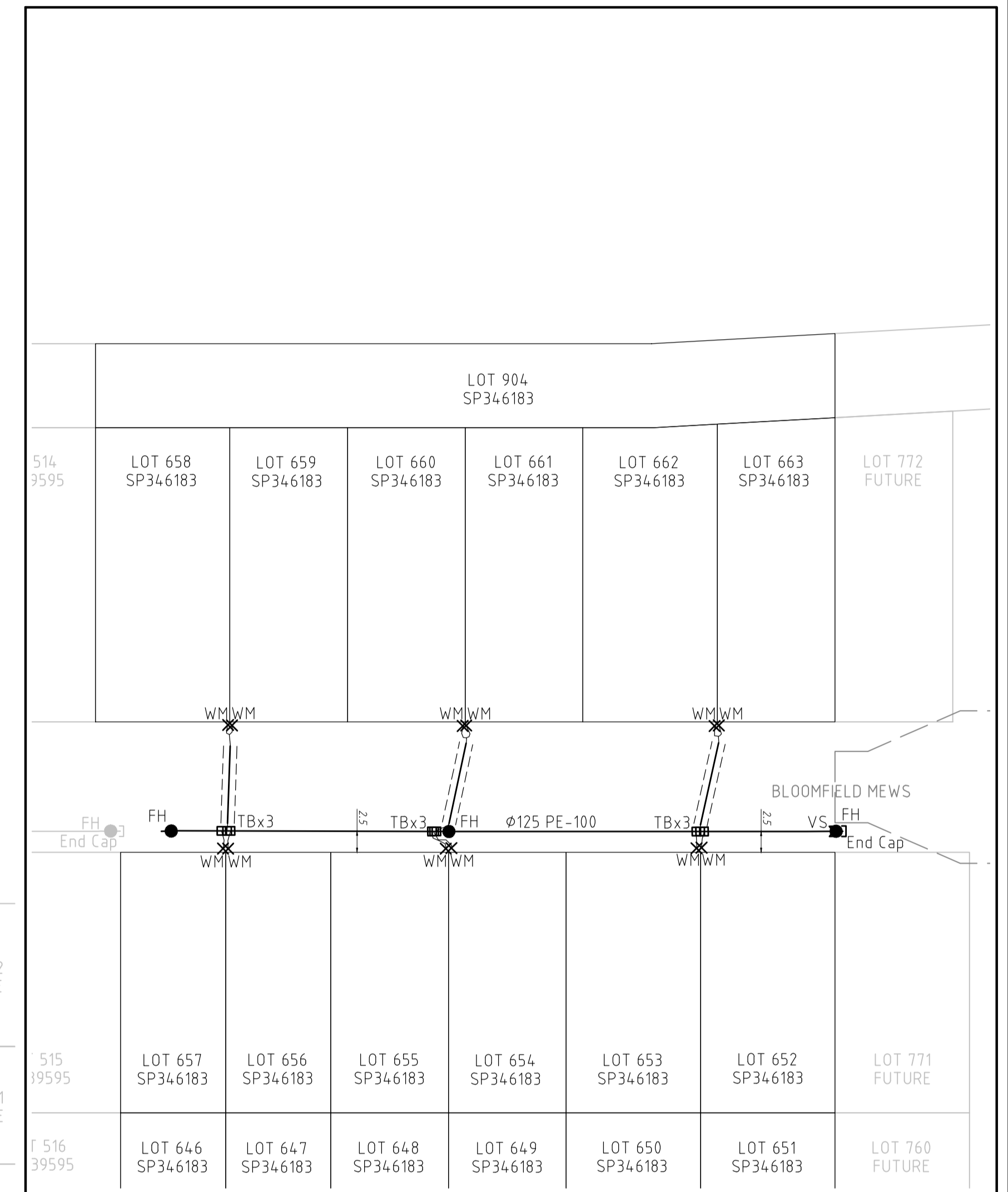
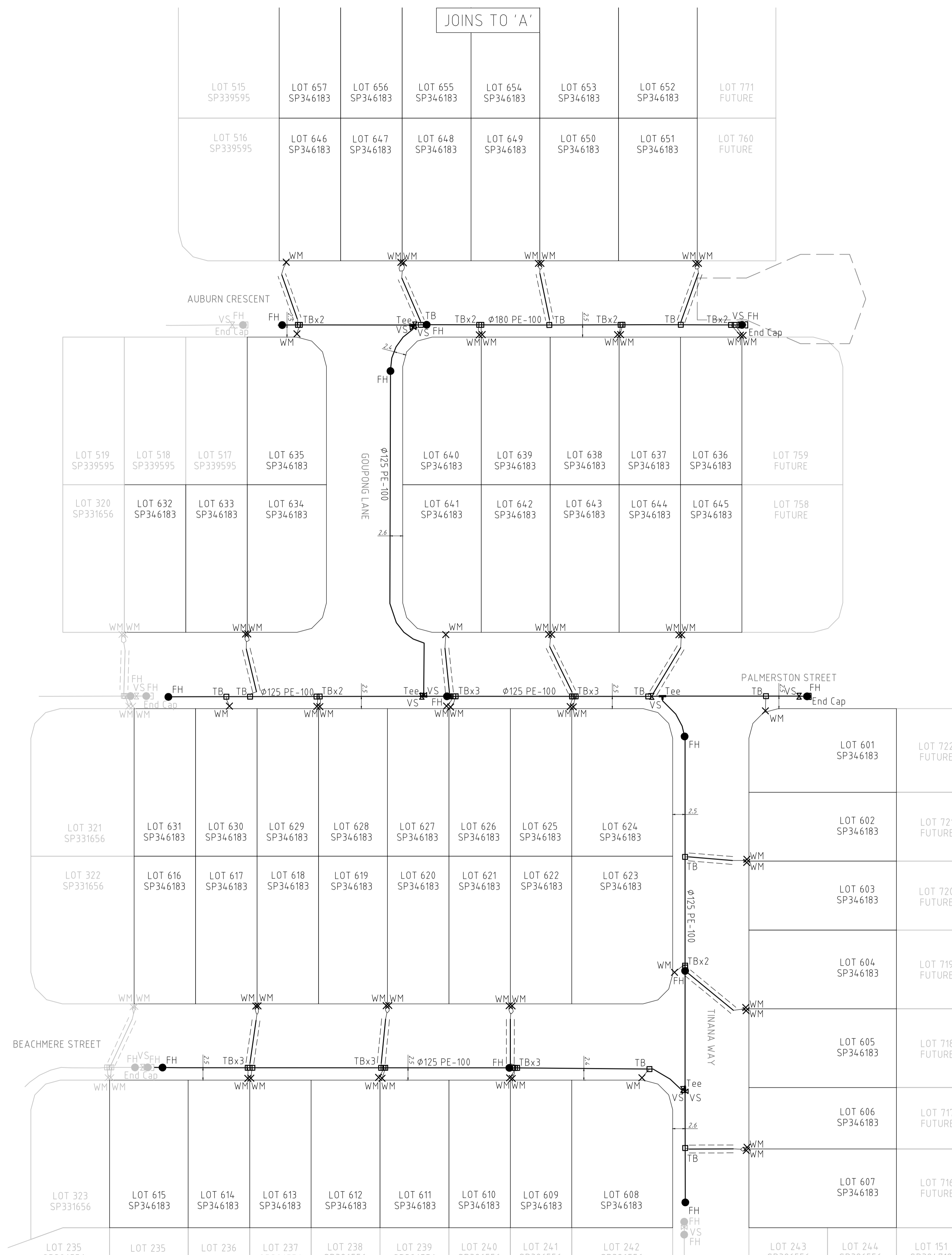
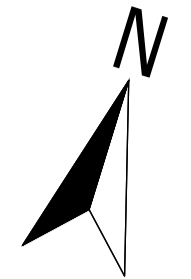


LEGEND

- (FH) FIRE HYDRANT
- ⊗ (VS) STOP VALVE/(FP) FLUSHING POINT
- ⊗ (VA) SCOUR ASSEMBLY
- (RT) READY TAP/(TB) TAPPING BAND
- × (WM) WATER METER (SEQ 20φ)
- ┌ END CAP
- └ TEE
- ^ REDUCER
- BEND
- DICL WATER MAIN CROSSING
- CONDUIT/CROSSING
- EXISTING WATER



NOTES

- ALL FIRE HYDRANTS ARE φ100 SPRING U.N.O.
- ALL WATER SERVICE PIPE CONDUITS ARE φ PVC-M PN12 U.N.O.
- ALL WATER MAIN PIPES ARE PN16 U.N.O.

REGISTERED CADASTRAL SURVEYOR (QLD) CERTIFICATION

LandPartners Pty Ltd, hereby certify that the vertical and horizontal locations and dimensions shown on this plan are a true and correct record and were located by survey.

*R. G. Anderson* 4118 28/03/2025  
 Authorised Delegate Rego No. Date  
 LandPartners Pty Ltd  
 Registered Qld Surveyor Corporation

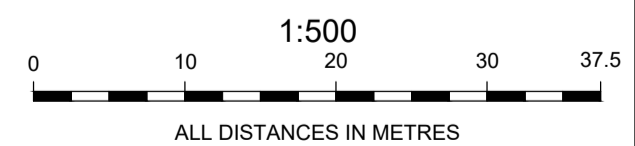
ENGINEER'S CERTIFICATION

I, \_\_\_\_\_, hereby certify that:

1. The information contained in this drawing / document is in compliance with approved drawings and design.
2. The new water and sewerage works defined by this drawing have been designed and constructed in accordance with the SEQ Code.
3. This represents an accurate record of as-constructed works.
4. I accept responsibility for the information contained in this drawing / document.

RPEQ (signature) RPEQ No. Date:

AS CONSTRUCTED



A1

INDEX	DATE	INITIALS	REVISIONS	DRAWN	CHECKED	PASSED
1	27/03/2025	RA	INITIAL ISSUE	MJK	RA	RA

DRAWN	MJK	27/03/2025
CHECKED	RA	27/03/2025
PASSED	RA	27/03/2025
INITIALS	DATE	



Queensland Urban Utilities

AURORA STAGE 7  
 AS-CONSTRUCTED WATER  
 23-PNT-66894

SCALE	1:500
SHEET 1 OF 1 SHEETS	
DRAWING NO.	BRSS5365-007-83-1