



STATION	EAST	NORTH	ZONE	P.U.	LINEAGE	METHOD
O Screw from Stn 9	476 676.626	6 939 801.761	56	0.02	Derived	Network RTK
Star Pkt from Stn 14	476 601.520	6 940 057.427	56	0.02	Derived	Network RTK

MGA COORDINATES GDA-2020

Reg placed at all new corners unless otherwise stated.

Original information compiled from SP326566 in the Department of Resources.

TABLE A
ORIG CREEK POINTS

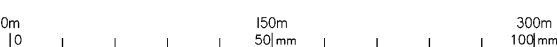
BEARING	DIST
345°59'	24.4
32°36'	12.75
35°20'	18.37
33°24'	21.5
335°10'	22.22
33°36'	22.87
341°46'	29.74
328°53'	19.59
357°56'	27.07
4°02'	17.73
12°50'	18.25
7°15'	31.72
2°49'	12.62

LandPartners Pty Ltd (ACN 118 146 008) hereby certify that the land comprised in this plan was surveyed by the corporation, by Matthew James TORLEY, surveying associate, for whose work the corporation accepts responsibility, under the supervision of Robin Gene ANDERSON, cadastral surveyor and that the plan is accurate, that the said survey was performed in accordance with the Survey and Mapping Infrastructure Act 2003 and Surveyors Act 2003 and associated Regulations and Standards and that the said survey was completed on 9/11/2022.

Director

Director

14/12/2022
Date



Plan of Lots 301-340, 921 and Easements A & B in Lots 303 & 304 respectively
 Cancelling Lot 920 on SP326566

LOCAL GOVERNMENT: IPSWICH C.C. LOCALITY: RIPLEY

Meridian: MGA (Zone 56) vide Network RTK

Survey Records: No

Scale: 1:3000
 Format: STANDARD

SP331656

State copyright reserved.

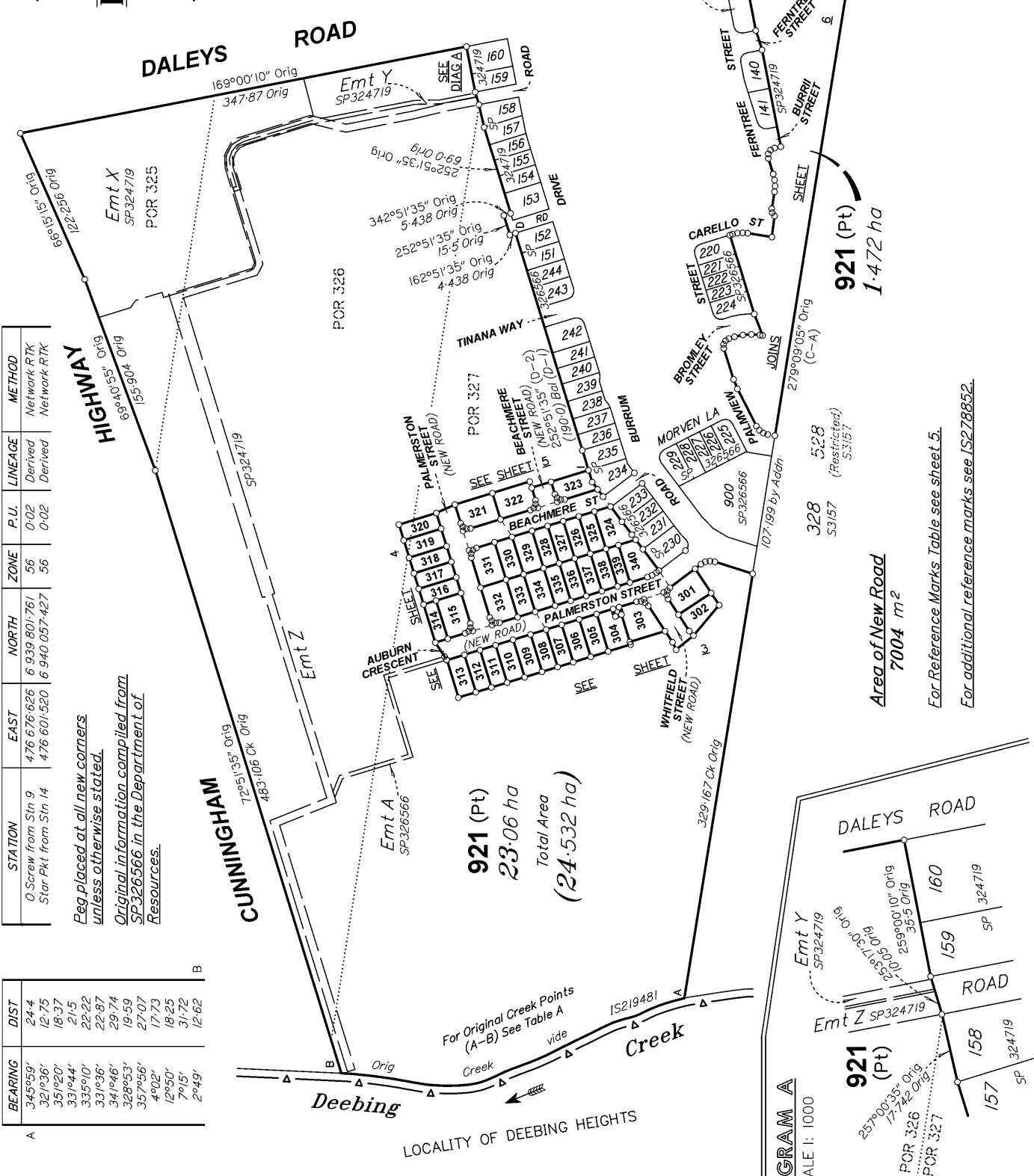
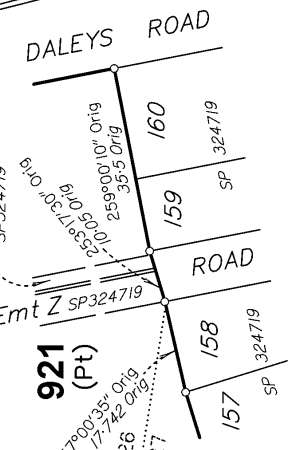


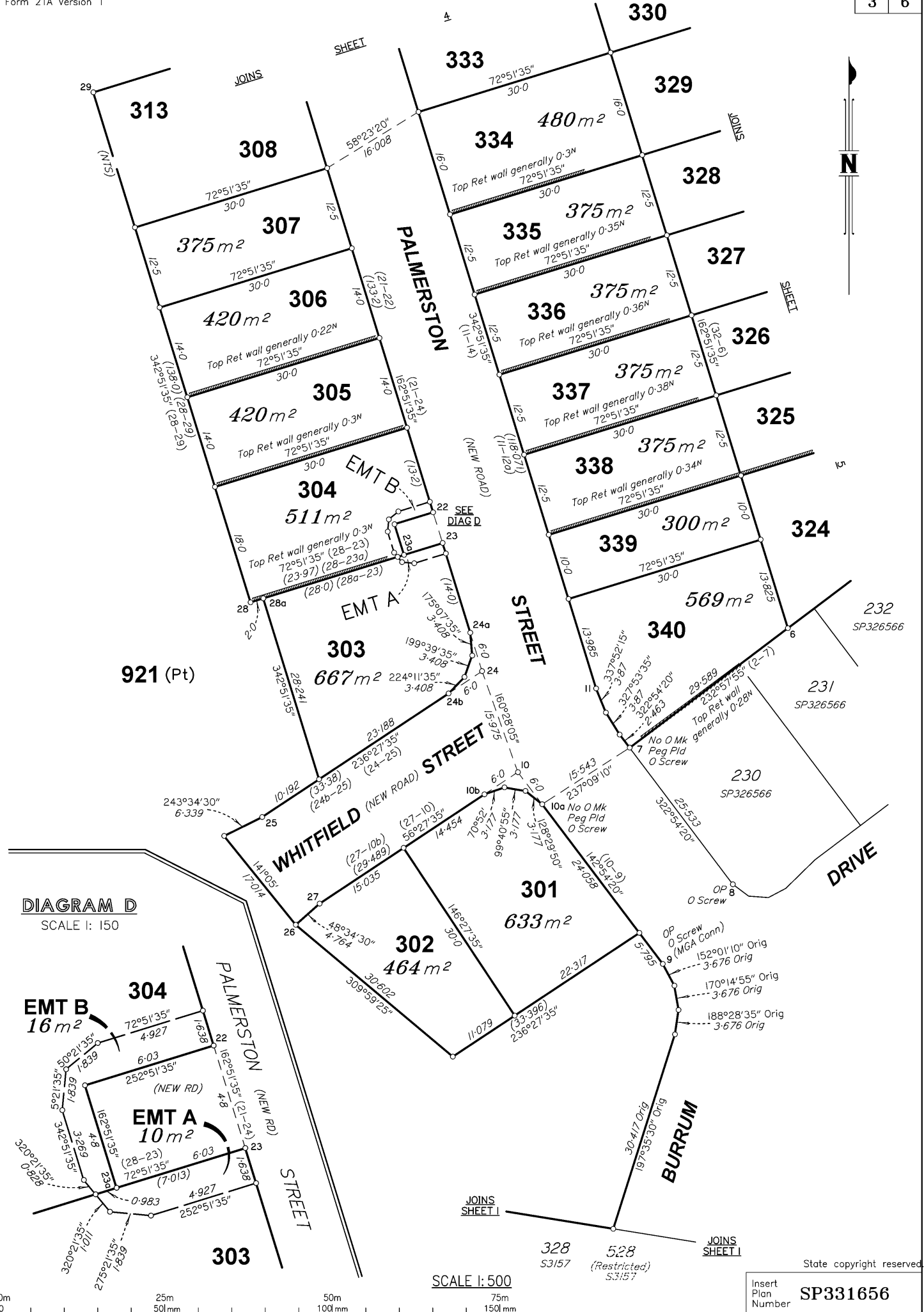
DIAGRAM A
SCALE 1: 1000

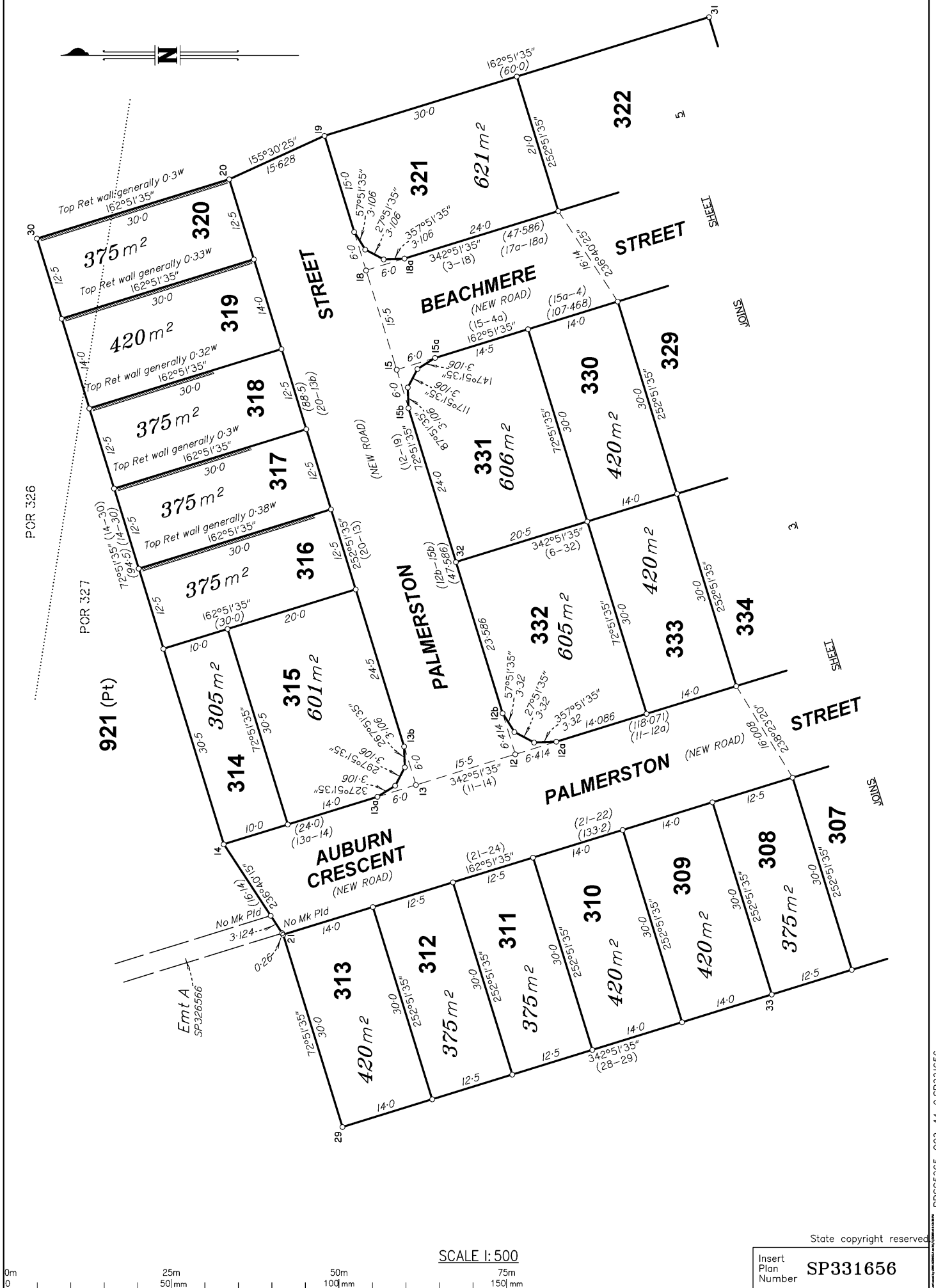


921 (Pt)
1.472 ha

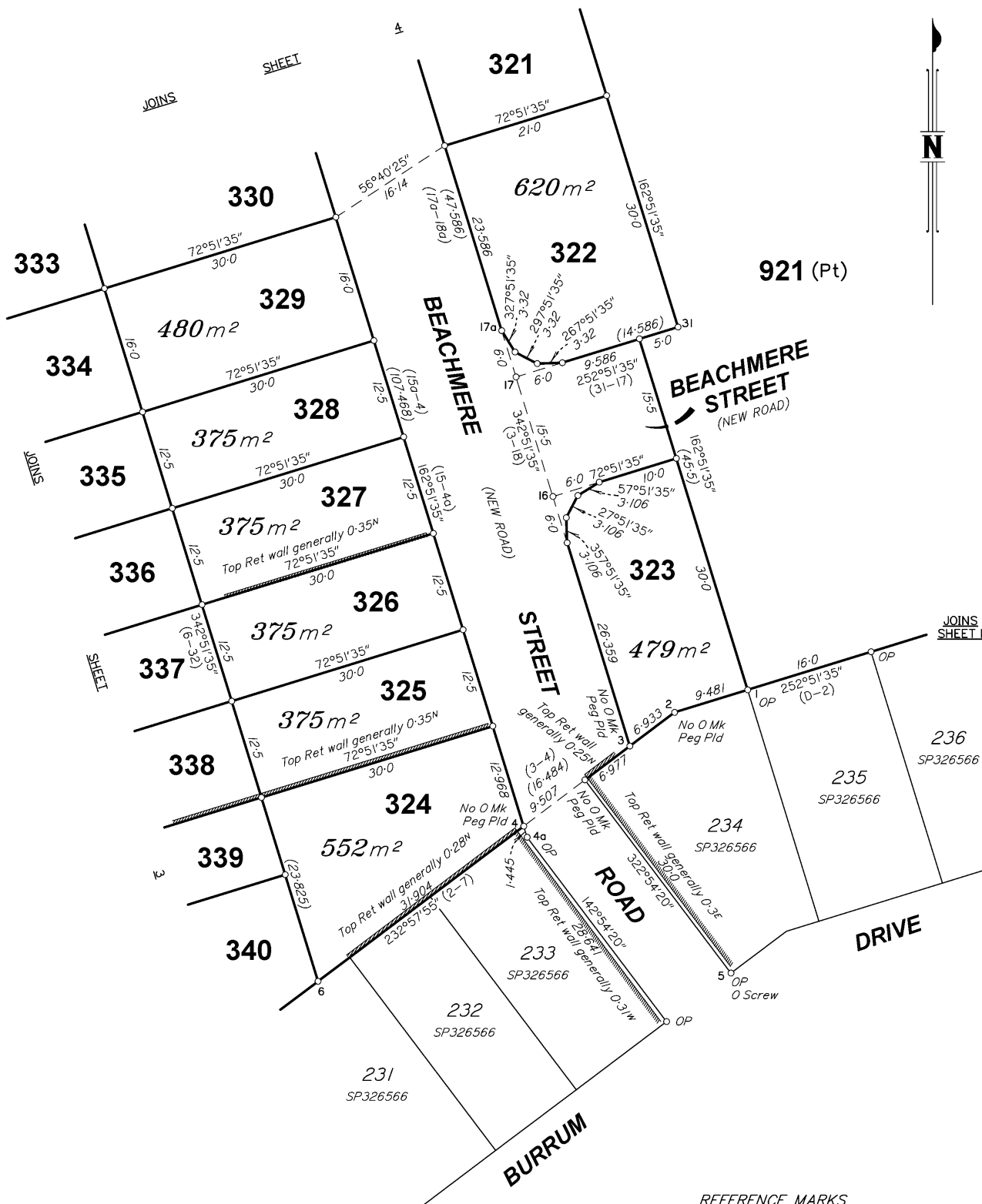
Area of New Road
7004 m²

For Reference Marks Table see sheet 5.
 For additional reference marks see IS278852.





BRSS365_003_44_9 SP331656



REFERENCE MARKS

STN	TO	ORIGIN	BEARING	DIST
5	O Screw in Kb	42/SP326566	154°41'	6.474
6	Star Pkt		217°26'20"	9.937
7	O Screw in Kb	50/SP326566	216°37'55"	4.272
8	O Screw in Kb	46b/SP326566	196°33'40"	4.9
9	O Screw in Kb	47b/SP326566	50°17'05"	4.43
10a	O Screw in Kb	49/SP326566	80°25'35"	4.702
14	Star Pkt		348°00'35"	56.314
19	Star Pkt		246°30'45"	13.12
26	Star Pkt		87°29'05"	4.146
30	Star Pkt		282°38'45"	47.353
33	Star Pkt		251°24'35"	39.012

MGA Conn

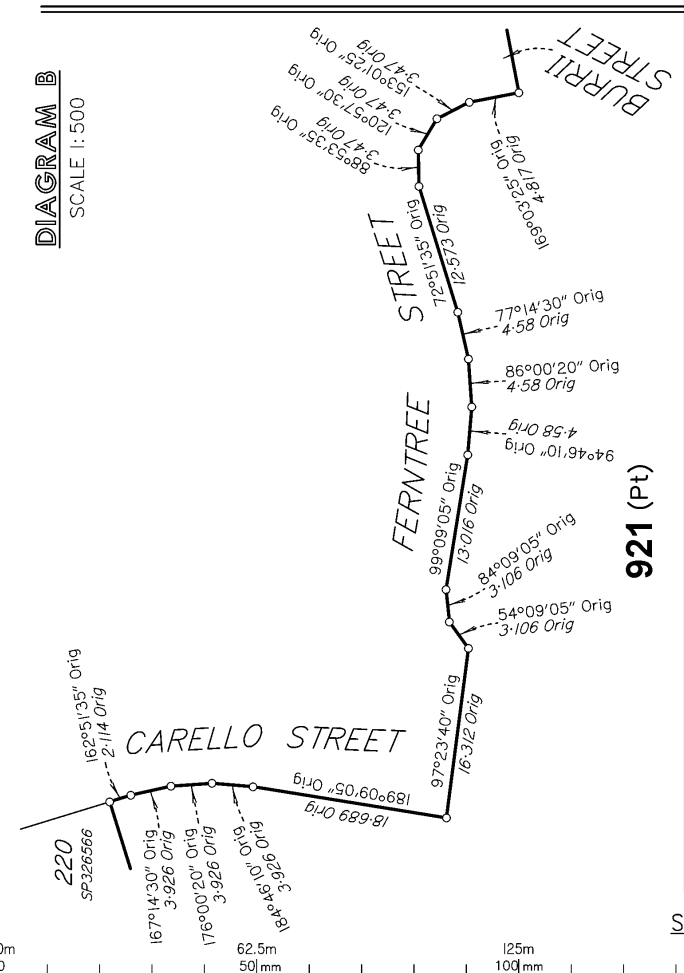
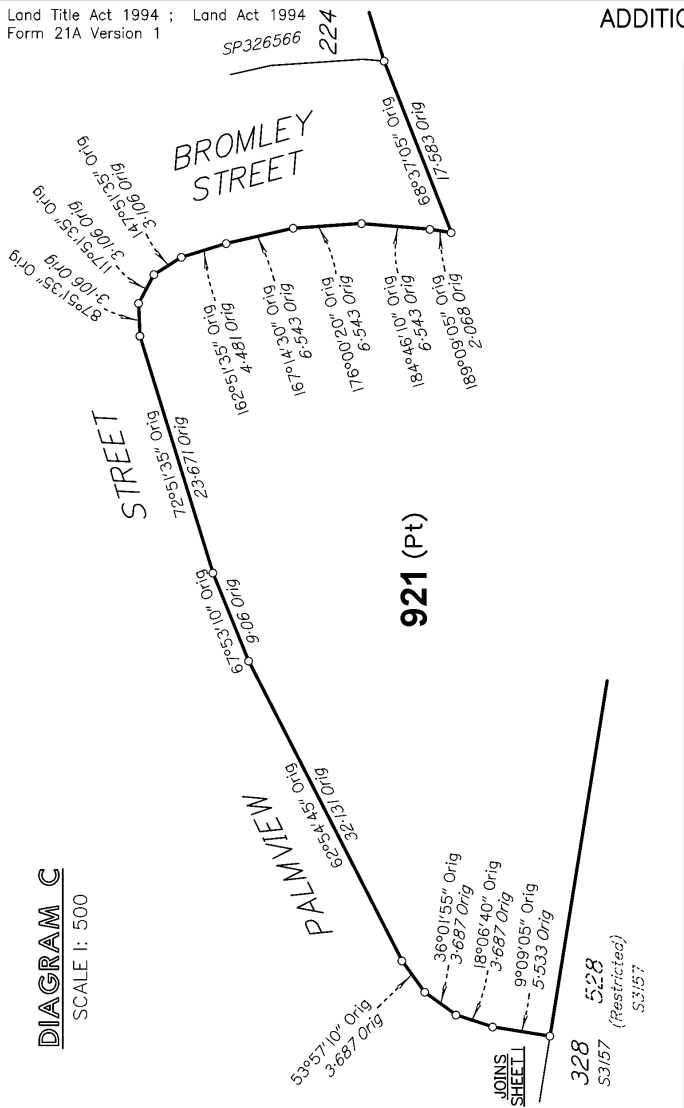
MGA Conn

State copyright reserved

SCALE 1:500

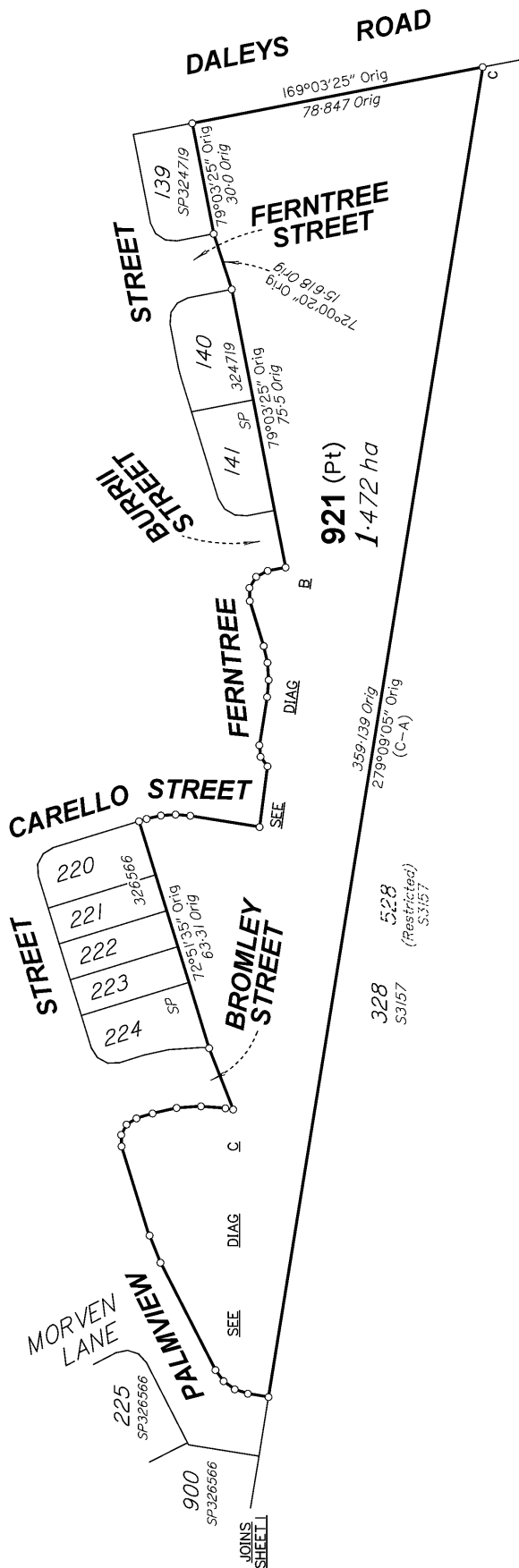


Insert Plan Number
SP331656



SCALE 1: 1250

0m 50mm 125m 100mm 187.5m 150mm



Insert Plan Number SP331656

State copyright reserved